



cornette®

SPRING - SUMMER 2024

**she**  
**cornette**<sup>®</sup>  
 WOMENS PAJAMAS COLLECTION



**CAROLINE**

625/293 | SIZE: S-2XL  
 COMPOSITION: MODAL 100%



**CYNTHIA**

624/292 | SIZE: S-3XL  
 COMPOSITION: MODAL 100%



**CAROLINE 2**

619/294 | SIZE: S-2XL  
 COMPOSITION: MODAL 100%



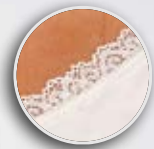
**STELLA**

659/290 | SIZE: S-2XL  
COMPOSITION T-SHIRT: MODAL 100%  
COMPOSITION PANTS: COTTON 100%



**FLORA**

658/288 | SIZE: S-5XL  
COMPOSITION: COTTON 100%



**FLORA 2**

651/289 | SIZE: S-5XL  
COMPOSITION: COTTON 100%



**FELICIA**

657/291 | SIZE: S-2XL  
COMPOSITION: COTTON 100%



**corneite**<sup>®</sup>



**3  
PACK**



**WAKE UP**

665/280 | SIZE: S-2XL  
COMPOSITION: COTTON 100%

**WAKE UP**

665/280 | SIZE: S-2XL  
COMPOSITION: COTTON 100%



**WAKE UP 2**

612/282 | SIZE: S-5XL  
COMPOSITION: COTTON 100%



**SPRING**

369/281 | SIZE: S-5XL  
COMPOSITION: COTTON 100%



**GOOD NIGHT**

628/271 | SIZE: S-2XL  
COMPOSITION: COTTON 100%



**DELICIOUS**

628/248 | SIZE: S-2XL  
COMPOSITION: MODAL 100%



## VANESSA

743/277 | SIZE: S-2XL

COMPOSITION: T-SHIRT MODAL 100%  
PANTS COTTON 100%



## LILY

054/274 | SIZE: S-5XL

COMPOSITION: COTTON 100%



## MELISSA

815/278 | SIZE: S-2XL

COMPOSITION: COTTON 100%



**GRACE**

055/276 | SIZE: S-2XL  
COMPOSITION: COTTON 100%



**ALINE**

167/283 | SIZE: S-2XL  
COMPOSITION: COTTON 100%



**MADLENE**

742/279 | SIZE: S-2XL  
COMPOSITION: COTTON 100%



**SUGAR**

466/284 | SIZE: S-2XL  
COMPOSITION: COTTON 100%



**SUGAR**

466/284 | SIZE: S-2XL  
COMPOSITION: COTTON 100%



**CHARLOTTE**

087/285 | SIZE: S-2XL  
COMPOSITION: COTTON 100%



**ERICA 3**

484/287 | SIZE: S-2XL  
COMPOSITION: COTTON 100%



**ERICA 2**

346/295 | SIZE: S-2XL  
COMPOSITION: COTTON 100%



**ERICA**

482/286 | SIZE: S-2XL  
COMPOSITION: COTTON 100%





**MARINE**

053/267 | SIZE: S-2XL  
COMPOSITION: COTTON 100%



**MARINE 2**

617/268 | SIZE: S-5XL  
COMPOSITION: COTTON 100%



**ARIEL**

814/269 | SIZE: S-2XL  
COMPOSITION: COTTON 100%



**ARIEL 2**

094/270 | SIZE: S-2XL  
COMPOSITION: COTTON 100%





**CHOCOLAT**

365/296 | SIZE: S-2XL  
COMPOSITION: T-SHIRT: MODAL 100%  
PANTS: COTTON 100%



**AUSTRALIA 2**

628/272 | SIZE: S-2XL  
COMPOSITION: COTTON 100%



**WITH LOVE**

628/275 | SIZE: S-5XL  
COMPOSITION: T-SHIRT: COTTON 100%  
PANTS: COTTON 95%  
ELASTANE 5%



**IGA**

814/273 | SIZE: S-2XL  
COMPOSITION: COTTON 100%



**SALLY**

376/234 | SIZE: S-XL  
COMPOSITION: COTTON 100%



**3  
PACK**



**FLOWERS**

665/252 | SIZE: S-L  
COMPOSITION: COTTON 100%

**FLOWERS**

665/252 | SIZE: S-L  
COMPOSITION: COTTON 100%



**PAROTTS**

628/244 | SIZE: S-2XL  
COMPOSITION: COTTON 100%



**JULLY**

924/261 | SIZE: S-L  
COMPOSITION: MODAL 95%  
LYCRA 5%



**TOGETHER**

228/225 | SIZE: S-XL  
COMPOSITION T-SHIRT: MODAL 100%  
COMPOSITION PANTS: COTTON 100%



**ALICE**

448/230 | SIZE: S-XL  
COMPOSITION: COTTON 100%



**SALMA**

840/247 | SIZE: S-L  
COMPOSITION: COTTON 100%



**LISA**

445/227 | SIZE: M-XL  
COMPOSITION: COTTON 100%



**SYLVIA**

446/228 | SIZE: M-2XL  
COMPOSITION: COTTON 100%



**ALISON 3**

857/266 | SIZE: S-3XL  
COMPOSITION: COTTON 100%



**ELLEN 2**

818/257 | SIZE: S-XL  
COMPOSITION: COTTON 100%



**JESSIE 2**

610/251 | SIZE: S-XL  
COMPOSITION: COTTON 100%



**BECKY**

450/233 | SIZE: S-2XL  
COMPOSITION: COTTON 100%



**T-SHIRT**

908/01 | SIZE: S-2XL  
COMPOSITION:  
COTTON 100%

**PANTS**

609/11 | SIZE: S-2XL  
COMPOSITION: COTTON 100%



**T-SHIRT**

908/09 | SIZE: S-2XL  
COMPOSITION:  
COTTON 100%

**PANTS**

609/10 | SIZE: S-2XL  
COMPOSITION: COTTON 100%



**PANTS**

690/39 | SIZE: S-2XL  
COMPOSITION: COTTON 100%



**T-SHIRT**

918/05 | SIZE: S-2XL  
COMPOSITION:  
COTTON 95%  
ELASTAN 5%

**PANTS**

690/29 | SIZE: S-XL  
COMPOSITION: COTTON 100%



**T-SHIRT**

918/03 | SIZE: S-2XL  
COMPOSITION:  
COTTON 95%  
ELASTAN 5%

**PANTS**

690/37 | SIZE: S-2XL  
COMPOSITION: COTTON 100%



**T-SHIRT**

918/01 | SIZE: S-2XL  
COMPOSITION:  
COTTON 95%  
ELASTAN 5%

**PANTS**

909/02 | SIZE: S-2XL  
COMPOSITION: COTTON 100%

**SIZE +**  
WOMANS COLLECTION  
**corneite**<sup>®</sup>  
**PAJAMA'S**



**WITH LOVE**

628/275 | SIZE: S-5XL  
COMPOSITION: T-SHIRT - COTTON 100%  
PANTS - COTTON 95%  
ELASTANE 5%



**LILY**

054/274 | SIZE: S-5XL  
COMPOSITION: COTTON 100%



**MARINE 2**

617/268 | SIZE: S-5XL  
COMPOSITION: COTTON 100%



**WAKE UP 2**

612/282 | SIZE: S-5XL  
COMPOSITION: COTTON 100%



**FLORA 2**

651/289 | SSIZE: S-5XL  
COMPOSITION: COTTON 100%



**SPRING**

369/281 | SIZE: S-5XL  
COMPOSITION: COTTON 100%



**FLORA**

658/288 | SIZE: S-5XL  
COMPOSITION: COTTON 100%



**she&SHE**  
**cornette**®  
 MOTHER AND DAUGHTER COLLECTION

**GOOD NIGHT**  
 787/105 | SIZE: 92 - 128  
 788/105 | SIZE: 140 - 164  
 COMPOSITION: COTTON 100%

**GOOD NIGHT**  
 628/271 | SIZE: S-2XL  
 COMPOSITION: COTTON 100%



**MARINE**  
 053/267 | SIZE: S-2XL  
 COMPOSITION: COTTON 100%

**MARINE**  
 245/103 | SIZE: 92-128  
 246/103 | SIZE: 140-164  
 COMPOSITION: COTTON 100%





## WAKE UP

665/280 | SIZE: S-2XL  
COMPOSITION: COTTON 100%

## WAKE UP

788/106 | SIZE: 140 - 164  
COMPOSITION: COTTON 100%



## AUSTRALIA 2

628/272 | SIZE: S-2XL  
COMPOSITION: COTTON 100%

## AUSTRALIA 2

787/104 | SIZE: 92-128  
788/104 | SIZE: 140-164  
COMPOSITION: COTTON 100%

# LITTLE GIRL

## cornette®

GIRLS COLLECTION



### AUSTRALIA 2

787/104 | SIZE: 92-128  
788/104 | SIZE: 140-164  
COMPOSITION: COTTON 100%



### GOOD NIGHT

787/105 | SIZE: 92 - 128  
788/105 | SIZE: 140 - 164  
COMPOSITION: COTTON 100%



**BALLOONS**

787/101 | SIZE: 104-128  
COMPOSITION: COTTON 100%



**BALLOONS 2**

745/102 | SIZE: 92-140  
COMPOSITION: COTTON 100%



**PARROTS**

787/98 | SIZE: 92-128  
COMPOSITION: COTTON 100%



**COOL 2**

787/91 | SIZE: 92-128  
COMPOSITION: COTTON 100%



**UNICORN**

459/96 | SIZE: 92-128  
COMPOSITION: COTTON 100%

# GIRL corneite®

GIRL COLLECTION



## MARINE

245/103 | SIZE: 92-128  
246/103 | SIZE: 140-164  
COMPOSITION: COTTON 100%



## WAKE UP

788/106 | SIZE: 140-164  
COMPOSITION: COTTON 100%



## CARIBBEAN

787/93 | SIZE: 92-128  
788/93 | SIZE: 140-152  
COMPOSITION: COTTON 100%

**he**  
**AUTHENTIC**  
 MENS COLLECTION  
**cornette®**



**213 RIBBED**

SIZE: S-5XL  
COMPOSITION: COTTON 100%



**202 NEW**

SIZE: S-5XL  
COMPOSITION: COTTON 100%



**201 NEW**

SIZE: S-5XL  
COMPOSITION: COTTON 100%



**213 RIBBED**

SIZE: S-5XL  
COMPOSITION: COTTON 100%



**202 NEW**

SIZE: S-5XL  
COMPOSITION: COTTON 100%



**201 NEW**

SIZE: S-5XL  
COMPOSITION: COTTON 100%



220 | SIZE: S-2XL  
092 | SIZE: 3XL-5XL  
COMPOSITION: COTTON 95%  
ELASTANE 5%



220 | SIZE: S-2XL  
092 | SIZE: 3XL-5XL  
COMPOSITION: COTTON 95%  
ELASTANE 5%



221 | SIZE: S-2XL  
093 | SIZE: 3XL-5XL  
COMPOSITION: COTTON 95%  
ELASTANE 5%



220 | SIZE: S-2XL  
092 | SIZE: 3XL-5XL  
COMPOSITION: COTTON 95%  
ELASTANE 5%



220 | SIZE: S-2XL  
092 | SIZE: 3XL-5XL  
COMPOSITION: COTTON 95%  
ELASTANE 5%



226 | SIZE: S-2XL  
COMPOSITION: COTTON 95%  
ELASTANE 5%

# CLASSIC

MENS COLLECTION

# cornette®



001/147 | SIZE: S-2XL  
011/147 | SIZE: 3XL-5XL  
COMPOSITION: COTTON 100%



001/111 | SIZE: S-2XL  
011/111 | SIZE: 3XL-5XL  
COMPOSITION: COTTON 100%



001/149 | SIZE: S-2XL  
011/149 | SIZE: 3XL-5XL  
COMPOSITION: COTTON 100%



001/150 | SIZE: S-2XL  
011/150 | SIZE: 3XL-5XL  
COMPOSITION: COTTON 100%



001/151 | SIZE: S-2XL  
011/152 | SIZE: 3XL-5XL  
COMPOSITION: COTTON 100%



001/152 | SIZE: S-2XL  
011/152 | SIZE: 3XL-5XL  
COMPOSITION: COTTON 100%



001/153 | SIZE: S-2XL  
011/153 | SIZE: 3XL-5XL  
COMPOSITION: COTTON 100%



001/154 | SIZE: S-2XL  
011/154 | SIZE: 3XL-5XL  
COMPOSITION: COTTON 100%



001/139 | SIZE: S-2XL  
011/139 | SIZE: 3XL-5XL  
COMPOSITION: COTTON 100%



001/94 | SIZE: S-2XL  
011/94 | SIZE: 3XL-5XL  
COMPOSITION: COTTON 100%



001/146 | SIZE: S-2XL  
011/146 | SIZE: 3XL-5XL  
COMPOSITION: COTTON 100%



001/134 | SIZE: S-2XL  
011/134 | SIZE: 3XL-5XL  
COMPOSITION: COTTON 100%



001/138 | SIZE: S-2XL  
011/138 | SIZE: 3XL-5XL  
COMPOSITION: COTTON 100%



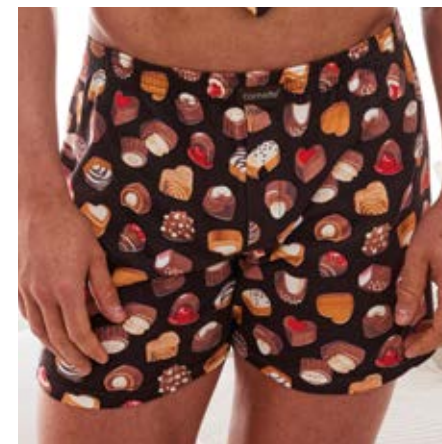
001/141 | SIZE: S-2XL  
011/141 | SIZE: 3XL-5XL  
COMPOSITION: COTTON 100%



001/129 | SIZE: S-2XL  
COMPOSITION: COTTON 100%



001/155 | SIZE: S-2XL  
011/155 | SIZE: 3XL-5XL  
COMPOSITION: COTTON 100%



001/157 | SIZE: S-2XL  
011/157 | SIZE: 3XL-5XL  
COMPOSITION: COTTON 100%



001/156 | SIZE: S-2XL  
011/156 | SIZE: 3XL-5XL  
COMPOSITION: COTTON 100%



# COMFORT

MENS COLLECTION

# cornette®



002/275 | SIZE: S-2XL  
008/275 | SIZE: 3XL-5XL  
COMPOSITION: COTTON 100%



002/276 | SIZE: S-2XL  
008/276 | SIZE: 3XL-5XL  
COMPOSITION: COTTON 100%



002/277 | SIZE: S-2XL  
008/277 | SIZE: 3XL-5XL  
COMPOSITION: COTTON 100%



002/278 | SIZE: S-2XL  
008/278 | SIZE: 3XL-5XL  
COMPOSITION: COTTON 100%



002/279 | SIZE: S-2XL  
008/279 | SIZE: 3XL-5XL  
COMPOSITION: COTTON 100%



002/280 | SIZE: S-2XL  
008/280 | SIZE: 3XL-5XL  
COMPOSITION: COTTON 100%



002/281 | SIZE: S-2XL  
008/281 | SIZE: 3XL-5XL  
COMPOSITION: COTTON 100%



002/282 | SIZE: S-2XL  
008/282 | SIZE: 3XL-5XL  
COMPOSITION: COTTON 100%



002/283 | SIZE: S-2XL  
008/283 | SIZE: 3XL-5XL  
COMPOSITION: COTTON 100%



002/260 | SIZE: S-2XL  
008/260 | SIZE: 3XL-5XL  
COMPOSITION: COTTON 100%



002/262 | SIZE: S-2XL  
008/262 | SIZE: 3XL-5XL  
COMPOSITION: COTTON 100%



002/264 | SIZE: S-2XL  
008/264 | SIZE: 3XL-5XL  
COMPOSITION: COTTON 100%



002/255 | SIZE: S-2XL  
008/255 | SIZE: 3XL-5XL  
COMPOSITION: COTTON 100%



002/256 | SIZE: S-2XL  
008/256 | SIZE: 3XL-5XL  
COMPOSITION: COTTON 100%



002/258 | SIZE: S-2XL  
008/258 | SIZE: 3XL-5XL  
COMPOSITION: COTTON 100%



002/265 | SIZE: S-2XL  
008/265 | SIZE: 3XL-5XL  
COMPOSITION: COTTON 100%



002/268 | SIZE: S-2XL  
008/268 | SIZE: 3XL-5XL  
COMPOSITION: COTTON 100%



002/269 | SIZE: S-2XL  
008/269 | SIZE: 3XL-5XL  
COMPOSITION: COTTON 100%

**PRIME**  
 MENS COLLECTION  
**cornette®**



**904/110** | SIZE: S-2XL  
 COMPOSITION: COTTON 95%  
 ELASTANE 5%



**904/111** | SIZE: S-2XL  
 COMPOSITION: COTTON 95%  
 ELASTANE 5%



**904/112** | SIZE: S-2XL  
 COMPOSITION: COTTON 95%  
 ELASTANE 5%



**904/90** | SIZE: S-2XL  
 COMPOSITION: COTTON 95%  
 ELASTANE 5%



**904/103** | SIZE: S-2XL  
 COMPOSITION: COTTON 95%  
 ELASTANE 5%

# VARIOUS

MENS COLLECTION

cornette®



228/131 | SIZE: S-2XL  
233/131 | SIZE: S-2XL  
COMPOSITION: COTTON 85% POLYESTER 10%  
ELASTANE 5%



232/132 | SIZE: S-2XL  
228/132 | SIZE: S-2XL  
233/132 | SIZE: S-2XL  
COMPOSITION: COTTON 92% POLYESTER 3%  
ELASTANE 5%



228/134 | SIZE: S-2XL  
233/133 | SIZE: S-2XL  
COMPOSITION: COTTON 87% POLYESTER 8%  
ELASTANE 5%



228/134 | SIZE: S-2XL  
COMPOSITION: COTTON 87% POLYESTER 8%  
ELASTANE 5%



232/135 | SIZE: S-2XL  
228/135 | SIZE: S-2XL  
COMPOSITION: COTTON 87% POLYESTER 8%  
ELASTANE 5%



232/132 | SIZE: S-2XL  
COMPOSITION: COTTON 87% POLYESTER 8%  
ELASTANE 5%

**INFINITY**  
 MENS COLLECTION  
**cornette®**



**930/07** | SIZE: S-2XL  
 COMPOSITION: MODAL 95%  
 ELASTANE 5%



**912/84** | SIZE: S-2XL  
 COMPOSITION: MODAL 85%  
 POLYESTER 10%  
 ELESTANE 5%



**912/85** | SIZE: S-2XL  
 COMPOSITION: MODAL 90%  
 POLYESTER 5%  
 ELESTANE 5%



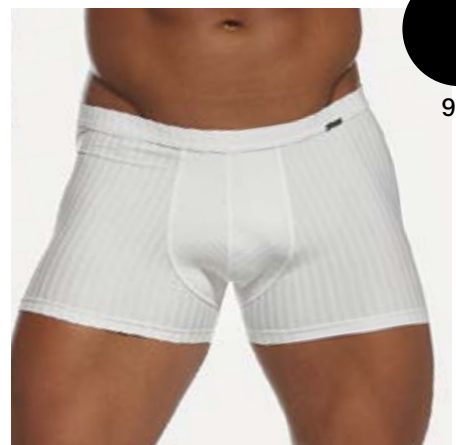
**912/86** | SIZE: S-2XL  
 COMPOSITION: MODAL 92%  
 POLYESTER 3%  
 ELESTANE 5%



**912/87** | SIZE: S-2XL  
 COMPOSITION: MODAL 90%  
 POLYESTER 5%  
 ELESTANE 5%



**912/88** | SIZE: S-2XL  
 COMPOSITION: MODAL 90%  
 POLYESTER 5%  
 ELESTANE 5%



**910/01** | SIZE: S-2XL  
 COMPOSITION: POLYAMIDE 90%  
 ELASTANE 10%



# HIGH EMOTION

MENS COLLECTION

# corneite®



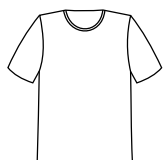
525



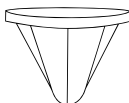
524



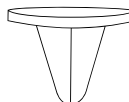
531 NEW



532 NEW



TANGA 501



STRINGI 502

FOR A LIST OF COLOURS OF HIGH EMOTION T-SHIRTS, SEE PAGE 101



**531** | SIZE: S-2XL  
COMPOSITION: COTTON 95%  
ELASTANE 5%



**532** | SIZE: S-2XL  
COMPOSITION: COTTON 95%  
ELASTANE 5%



508/143 | SIZE: S-2XL  
COMPOSITION: COTTON 95%  
ELASTANE 5%



508/144 | SIZE: S-2XL  
COMPOSITION: COTTON 95%  
ELASTANE 5%



508/145 | SIZE: S-2XL  
COMPOSITION: COTTON 95%  
ELASTANE 5%



508/128 | SIZE: S-2XL  
COMPOSITION: COTTON 95%  
ELASTANE 5%



503 WHITE | SIZE: S-2XL  
COMPOSITION: COTTON 95%  
ELASTANE 5%



503 BLACK | SIZE: S-2XL  
COMPOSITION: COTTON 95%  
ELASTANE 5%



508/146 | SIZE: S-2XL  
COMPOSITION: COTTON 95%  
ELASTANE 5%



508/147 | SIZE: S-2XL  
COMPOSITION: COTTON 95%  
ELASTANE 5%



508/126 | SIZE: S-2XL  
COMPOSITION: COTTON 95%  
ELASTANE 5%



507/34 | SIZE: S-2XL  
COMPOSITION: COTTON 95%  
ELASTANE 5%



507/35 | SIZE: S-2XL  
COMPOSITION: COTTON 95%  
ELASTANE 5%



507/36 | SIZE: S-2XL  
COMPOSITION: COTTON 95%  
ELASTANE 5%

# TATTOO

MENS COLLECTION  
**cornette®**



## WHISKEY 3

280/228 | SIZE: S-2XL  
 COMPOSITION: COTTON 95%  
 ELASTANE 5%



## KOALA

280/229 | SIZE: S-2XL  
 COMPOSITION: COTTON 95%  
 ELASTANE 5%



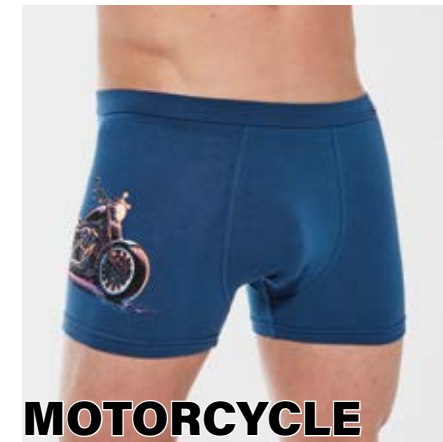
## PIRATE

280/230 | SIZE: S-2XL  
 COMPOSITION: COTTON 95%  
 ELASTANE 5%



## PARROT

280/231 | SIZE: S-2XL  
 COMPOSITION: COTTON 95%  
 ELASTANE 5%



## MOTORCYCLE

280/232 | SIZE: S-2XL  
 COMPOSITION: COTTON 95%  
 ELASTANE 5%



## RUBBER

280/221 | SIZE: S-2XL  
 COMPOSITION: COTTON 95%  
 ELASTANE 5%



**MUSHROOM**

280/223 | SIZE: S-2XL  
 COMPOSITION: COTTON 95%  
 ELASTANE 5%

**ALIEN**

280/225 | SIZE: S-2XL  
 COMPOSITION: COTTON 95%  
 ELASTANE 5%

**CHAMELEON**

280/206 | SIZE: S-2XL  
 COMPOSITION: COTTON 95%  
 ELASTANE 5%

**LION**

280/226 | SIZE: S-2XL  
 COMPOSITION: COTTON 95%  
 ELASTANE 5%

**DICES**

280/227 | SIZE: S-2XL  
 COMPOSITION: COTTON 95%  
 ELASTANE 5%

**BUNNY**

280/200 | SIZE: S-2XL  
 COMPOSITION: COTTON 95%  
 ELASTANE 5%

**LOBSTER**

280/208 | SIZE: S-2XL  
 COMPOSITION: COTTON 95%  
 ELASTANE 5%

**CARROT**

280/212 | SIZE: S-2XL  
 COMPOSITION: COTTON 95%  
 ELASTANE 5%

**RED WINE**

280/211 | SIZE: S-2XL  
 COMPOSITION: COTTON 95%  
 ELASTANE 5%

**FLAMINGO**

280/205 | SIZE: S-2XL  
 COMPOSITION: COTTON 95%  
 ELASTANE 5%

**CARS**

280/216 | SIZE: S-2XL  
 COMPOSITION: COTTON 95%  
 ELASTANE 5%

he  
MENS COLLECTION  
cornette®  
PAJAMA'S

**CANADA**

136/166 | SIZE: S-5XL  
COMPOSITION: COTTON 100%



**MARINE**

073/155 | SIZE: S-2XL  
COMPOSITION: COTTON 100%



**PIRATES 2**

326/156 | SIZE: S-2XL  
COMPOSITION: COTTON 100%



**AUSTRALIA**

326/157 | SIZE: S-2XL  
COMPOSITION: COTTON 100%



**LONDON GIN**

326/159 | SIZE: S-2XL  
COMPOSITION: T-SHIRT COTTON 92%  
POLYESTER 8%  
PANTS COTTON 100%



**YOSEMITE**

326/160 | SIZE: S-2XL  
COMPOSITION: COTTON 100%



**FOCUS**

326/161 | SIZE: S-5XL  
COMPOSITION: COTTON 100%



**CANYON**

326/164 | SIZE: S-2XL  
COMPOSITION: T-SHIRT COTTON 92%  
POLYESTER 8%  
PANTS COTTON 100%



**AMIGO 2**

326/142 | SIZE: S-2XL  
COMPOSITION: T-SHIRT COTTON 92%  
POLYESTER 8%  
PANTS COTTON 100%



**LEAVES 2**

326/128 | SIZE: S-2XL  
COMPOSITION: COTTON 100%



**BRUCE**

332/163 | SIZE: S-2XL  
COMPOSITION: T-SHIRT COTTON 92%  
POLYESTER 8%  
PANTS COTTON 100%



**BUNNY**

326/254 | SIZE: S-5XL  
COMPOSITION: COTTON 100%



**HIGH PEAK**

925/162 | SIZE: S-2XL  
COMPOSITION: T-SHIRT COTTON 92%  
POLYESTER 8%  
PANTS COTTON 100%



**COCONUT**

323/144 | SIZE: S-2XL  
COMPOSITION: COTTON 100%



**BACK TO LIFE**

328/126 | SIZE: S-2XL  
COMPOSITION: COTTON 100%



**CHRIS**

326/152 | SIZE: S-2XL  
COMPOSITION: T-SHIRT COTTON 92%  
POLYESTER 8%  
PANTS COTTON 100%

330/32



330/33



330/34



330/35



330/37



330/39



330/41 | SIZE: S-2XL

338/36



338/37



338/38



338/39



338/40



338/42



338/45 | SSIZE: S-2XL



### BEETLES

323/158 | SIZE: S-2XL  
COMPOSITION: SHIRT - COTTON 95%  
ELASTANE 5%  
PANTS - COTTON 100%

109/15



109/24



109/21



109/25



109/23 | SIZE: S-2XLv  
COMPOSITION: COTTON 100%

110/21



110/23



110/15



110/25



110/24 | SIZE: S-2XL  
COMPOSITION: COTTON 100%



### CANYON 2

134/165 | SIZE: S-2XL  
COMPOSITION: T-SHIRT COTTON 92%  
POLYESTER 8%  
PANTS COTTON 100%



### CANADA

136/166 | SIZE: S-5XL  
COMPOSITION: COTTON 100%

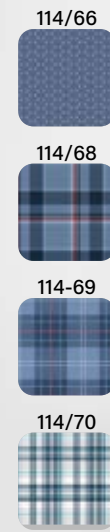


318/49 | SIZE: S-2XL  
COMPOSITION: COTTON 100%



### DYLAN

905/167 | SIZE: S-2XL  
COMPOSITION: COTTON 100%



114/67 | SIZE: S-5XL  
COMPOSITION: COTTON 100%

76

**he**

MENS COLLECTION

**cornette®**

**PAJAMA'S**



**PANTS**

691/49 | SIZE: S-5XL  
COMPOSITION: COTTON 100%



**PANTS**

691/48 | SIZE: S-5XL  
COMPOSITION: COTTON 100%

**PANTS**

698/14 | SIZE: S-5XL  
COMPOSITION: COTTON 100%

**PANTS**

698/15 | SIZE: S-5XL  
COMPOSITION: COTTON 100%

**PANTS**

698/11 | SIZE: S-5XL  
COMPOSITION: COTTON 100%

**PANTS**

698/16 | SIZE: S-2XL  
COMPOSITION: COTTON 100%

**PANTS**

698/13 | SIZE: S-2XL  
COMPOSITION: COTTON 100%

**PANTS**

698/12 | SIZE: S-2XL  
COMPOSITION: COTTON 100%





**they**  
FAMILY COLLECTION  
**corneille®**  
**PAJAMA'S**

**MARINE**

073/155 | SIZE: S-2XL  
COMPOSITION: COTTON 100%

**MARINE**

245/103 | SIZE: 92-128  
246/103 | SIZE: 140-164  
COMPOSITION: COTTON 100%

**MARINE**

801/111 | SIZE: 92-128  
802/111 | SIZE: 140-164  
COMPOSITION: COTTON 100%

**MARINE**

053/267 | SIZE: S-2XL  
COMPOSITION: COTTON 100%



**AUSTRALIA**

326/157 | SIZE: S-2XL  
COMPOSITION: COTTON 100%

**AUSTRALIA 2**

787/104 | SIZE: 92-128  
788/104 | SIZE: 140-164  
COMPOSITION: COTTON 100%

**AUSTRALIA 2**

628/272 | SIZE: S-2XL  
COMPOSITION: COTTON 100%

**AUSTRALIA**

789/113 | SIZE: 92-128  
790/113 | SIZE: 140-164  
COMPOSITION: COTTON 100%



**PIRATES 2**

326/156 | SIZE: S-2XL  
COMPOSITION: COTTON 100%

**PIRATES**

789/112 | SIZE: 92-128  
790/112 | SIZE: 140-164  
COMPOSITION: COTTON 100%



801/111 | SIZE: 92-128  
802/111 | SIZE: 140-164  
COMPOSITION: COTTON 100%

073/155 | SIZE: S-2XL  
COMPOSITION: COTTON 100%



## AUSTRALIA

789/113 | SIZE: 92-128  
 790/113 | SIZE: 140-164  
 COMPOSITION: COTTON 100%

## AUSTRALIA

326/157 | SIZE: S-2XL  
 COMPOSITION: COTTON 100%



## BEETLES

335/114 | SIZE: 140-164  
 COMPOSITION: T-SHIRT COTTON 95%  
 ELASTANE 5%  
 PANTS COTTON 100%

## BEETLES

323/158 | SIZE: S-2XL  
 COMPOSITION: T-SHIRT COTTON 95%  
 ELASTANE 5%  
 PANTS COTTON 100%

# LITTLE BOY

KIDS COLLECTION

cornette®  
PAJAMA'S



## MARINE

801/111 | SIZE: 92-128

802/111 | SIZE: 140-164

COMPOSITION: COTTON 100%



## PIRATES

789/112 | SIZE: 92-128

790/112 | SIZE: 140-164

COMPOSITION: COTTON 100%



## HUNGRY

473/115 | SIZE: 92-128

438/115 | SIZE: 140-164

COMPOSITION: T-SHIRT COTTON 92%, POLYESTER 8%  
PANTS COTTON 100%



**SAFARI**

219/106 | SIZE: 92-128  
COMPOSITION: COTTON 100%

**SPEED**

219/107 | SIZE: 92-140  
COMPOSITION: COTTON 100%

**BLUE DOCK**

789/96 | SIZE: 92-128  
790/96 | SIZE: 140-152  
COMPOSITION: COTTON 100%

**TRACTOR**

222/100 | SIZE: 92-128  
COMPOSITION: COTTON 100%

**TRACTOR 2**

789/101 | SIZE: 92-128  
COMPOSITION: COTTON 100%

**MACHINE 2**

789/87 | SIZE: 92-128  
COMPOSITION: COTTON 100%

# BOY

KIDS COLLECTION

## cornette®

### PAJAMA'S

790/103 | SIZE: 140-164  
COMPOSITION: COTTON 100%



### AUSTRALIA

789/113 | SIZE: 92-128  
790/113 | SIZE: 140-164  
COMPOSITION: COTTON 100%



### SURFING

476/116 | SIZE: 140-164  
COMPOSITION: COTTON 100%



### BETLES

335/114 | SIZE: 140-164  
COMPOSITION: T-SHIRT COTTON 95%  
ELASTANE 5%  
PANTS COTTON 100%

**TIGER**

281/108 | SIZE: 116-128  
 282/108 | SIZE: 140-152  
 COMPOSITION: COTTON 100%

**TIGER 2**

281/109 | SIZE: 128  
 282/109 | SIZE: 140-152  
 COMPOSITION: COTTON 100%

**TIGER 3**

281/110 | SIZE: 128  
 282/110 | SIZE: 140-152  
 COMPOSITION: COTTON 100%

**SAFARI**

438/105 | SIZE: 140-164  
 COMPOSITION: T-SHIRT COTTON 92%  
 POLYESTER 8%  
 PANTS COTTON 100%

**ROUTE 66**

790/103 | SIZE: 140-164  
 COMPOSITION: COTTON 100%

**YOUNG  
BOY**  
YOUNG COLLECTION  
**corneite®**  
**PAJAMA'S**

**CITY**

504/46 | SIZE: 164-188  
COMPOSITION: COTTON 100%

**SYDNEY**

500/47 | SIZE: 164-182  
COMPOSITION: COTTON 100%

**AUSTRALIA**

164/48 | SIZE: 164-182  
COMPOSITION: COTTON 100%

**SUMMER TIME**

500/45 | SIZE: 164-188  
COMPOSITION: COTTON 100%





# BOY BOXERS

KIDS COLLECTION

cornette®



## PIRATES

701/135 | SIZE: 92-128  
700/135 | SIZE: 134-176  
COMPOSITION: COTTON 95%  
ELASTANE 5%



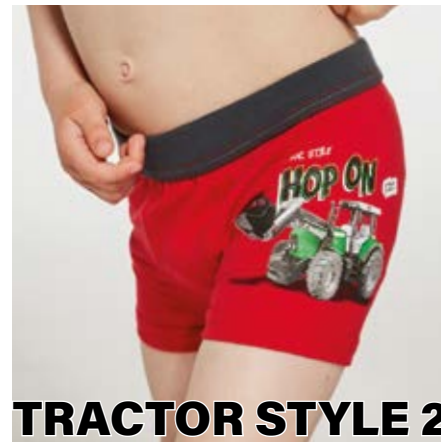
## MARINE

701/136 | SIZE: 92-128  
700/136 | SIZE: 140-164  
COMPOSITION: COTTON 95%  
ELASTANE 5%



## AUSTRALIA

701/134 | SIZE: 92-128  
700/134 | SIZE: 140-164  
COMPOSITION: COTTON 95%  
ELASTANE 5%



## TRACTOR STYLE 2

701/88 | SIZE: 92-128  
COMPOSITION: COTTON 95%  
ELASTANE 5%



## TRACTOR STYLE

701/87 | SIZE: 92-128  
COMPOSITION: COTTON 95%  
ELASTANE 5%



## MORO

701/115 | SIZE: 92-128  
700/115 | SIZE: 140-164  
COMPOSITION: COTTON 95%  
ELASTANE 5%

**BEETLE**

701/117 | SIZE: 140-164  
COMPOSITION: COTTON 95%  
ELASTANE 5%

**SHARK 2**

700/121 | SIZE: 140-164  
COMPOSITION: COTTON 95%  
ELASTANE 5%

**CAMPER**

701/122 | SIZE: 92-128  
700/122 | SIZE: 140-164  
COMPOSITION: COTTON 95%  
ELASTANE 5%

**LET'S GO PLAY**

700/129 | SIZE: 140-164  
COMPOSITION: COTTON 95%  
ELASTANE 5%

**COSMOS**

700/130 | SIZE: 140-164  
COMPOSITION: COTTON 95%  
ELASTANE 5%



316 | SIZE: 140-164  
COMPOSITION: COTTON 100%



866 | SIZE: 92-128  
867 | SIZE: 140-164  
COMPOSITION: COTTON 100%



864 | SIZE: 92-128  
865 | SIZE: 140-164  
COMPOSITION: COTTON 100%



cornette®

COLOURS OF AUTHENTIC T-SHIRTS

01 WHITE	02 BLACK	05 GRAPHITE	06 JEANS	09 RED	10 NAVY BLUE

COLOURS OF AUTHENTIC BOXERS SHORTS, SLIPS

01 WHITE	02 BLACK	05 GRAPHITE	06 JEANS	07 GREY BLUE	08 BLUE
09 RED	10 NAVY BLUE	11 JEANS PRINT	15 BLACK PRINT	16 KHAKI	18 MARINE
19 BLUE PRINT	25 GREY MELANGE	26 GRAPHITE MELANGE	29 TURQUOISE	41 PETROL	42 COBALT
43 CLARET	47 BLUE STONE	48 BLUE GRAPHITE			

COLOURS OF HIGH EMOTION T-SHIRTS

01 WHITE	02 BLACK	05 GRAPHITE	06 JEANS	10 NAVY BLUE	25 GREY MALENGE
41 PETROL	43 CLARET				

COLOURS OF HIGH EMOTION BOXERS SHORTS

01 WHITE	02 BLACK	05 GRAPHITE	06 JEANS	09 RED	10 NAVY BLUE
13 ORANGE	14 YELLOW	20 PINK	25 GREY MELANGE	29 TURQUOISE	41 PETROL
42 COBALT	43 CLARET	44 EMERALD			

COLOURS OF T-SHIRT 908

908/01	908/02	908/03	
908/05	908/06	908/07	908/08

COLOURS OF T-SHIRT 918

918/01	918/02	918/03	918/04		
918/05	918/06	918/07	918/08	918/09	918/10

WOMEN SIZE	SIZE	S	S-LONG	M	L	XL	2XL	3XL	4XL	5XL
		36	36	38	40	42	44	46	48	50
	HEIGHT	158/164	170/176	164/170		170/176				
	CHEST	88-92	88-92	92-96	96-100	100-104	104-108	108-112	112-118	118-124
	WAIST	72-76	72-76	76-80	80-84	84-88	88-92	92-96	96-102	102-108
HIPS	92-96	92-96	96-100	100-104	104-108	108-112	112-116	116-122	122-128	

MEN SIZE	SIZE	S	M	L	XL	2XL	3XL	4XL	5XL
		44	46	48	50	52	54	56	58
	HEIGHT	164/170	170/176	176/182	182/188				
	CHEST	92-96	96-100	100-104	104-108	108-112	112-116	116-122	122-128
WAIST	82-86	86-90	90-94	94-98	98-102	102-106	106-112	112-118	

GIRL&BOY SIZE	HEIGHT	86-92	98-104	110-116	122-128	134-140	146-152	158-164
	AGE	2-3	3-4	5-6	7-8	9-10	11-12	13-14
	CHEST	50-54	54-58	58-62	62-66	66-72	72-80	80-88
	WAIST	48-52	50-54	52-56	54-58	56-62	60-68	64-72

TEEN BOY SIZE	SIZE	XS	S	M	L
	HEIGHT	164	170	176	182
	CHEST	82-86	86-90	90-94	94-98
	WAIST	72-76	76-80	80-84	84-88

TEEN GIRL SIZE	SIZE	XS	S	M	L
	HEIGHT	158	164	170	176
	CHEST	76-80	80-84	84-88	88-92
	WAIST	62-66	66-70	70-74	74-78
	HIPS	82-86	86-90	90-94	94-98



## CONTENT

WOMENS PAJAMAS	2
PLUS SIZE	26
MOTHER AND DAUGHTER PAJAMAS	30
GIRLS PAJAMAS	34
AUTHENTIC	40
CLASSIC	44
COMFORT	48
PRIME	52
VARIOUS	54
INFINITY	56
HIGH EMOTION	58
TATTOO	62
MENS PAJAMAS	66
MENS PANTS	77
PAJAMAS FOR FAMILY	80
FATHER AND SON	82
BOYS PAJAMAS	86
YOUNG MEN PAJAMAS	94
BOYS BOXERS	96
KIDS UNDERWEAR	99
COLOURS LIST	101
SIZE TABLE	102
CONTENT	103



**cornette**<sup>®</sup>

**CORNETTE UNDERWEAR Sp. z o.o. Sp. J.**  
98-200 Sieradz, ul. Wojska Polskiego 75  
[www.cornette.pl](http://www.cornette.pl)